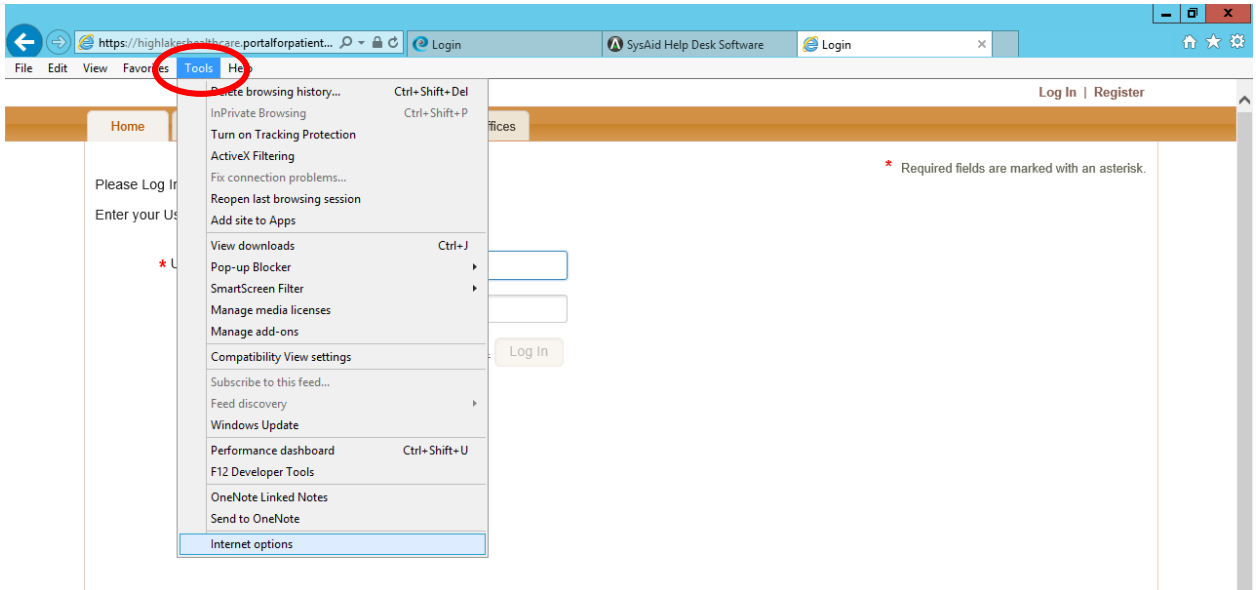


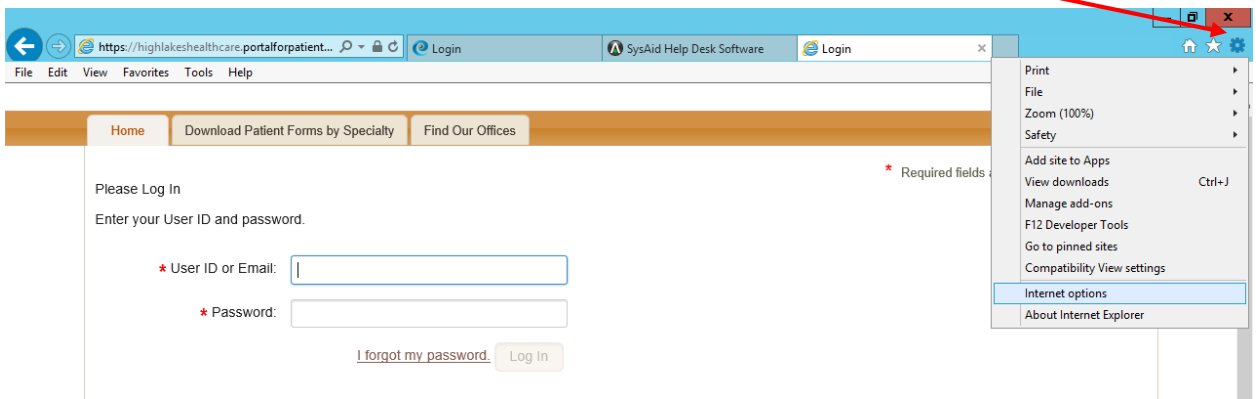
Adjusting Internet Explorer for Use with Patient Portal

Adjusting these settings will allow you to log into the High Lakes Health Care Patient Portal correctly. The screenshots are based on Internet Explorer 11.0.96, but should be accurate for earlier versions.

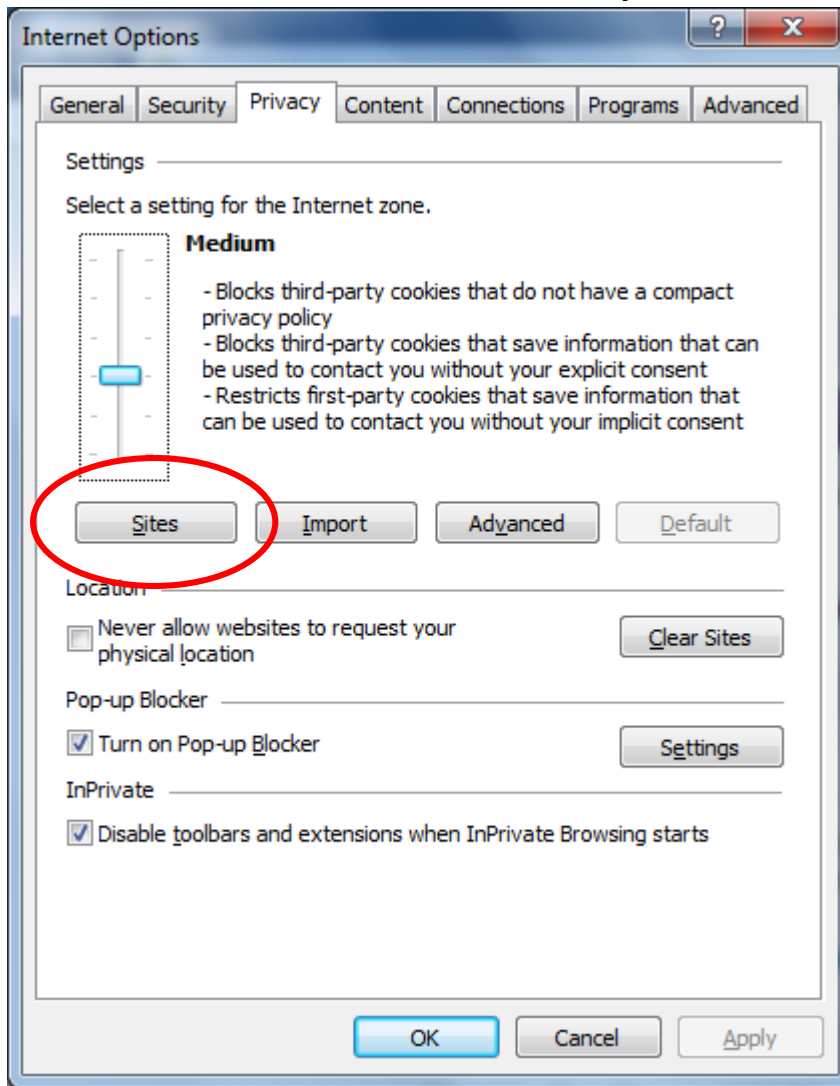
1. Open IE, and go to the **Tools** menu. Select **Internet Options**



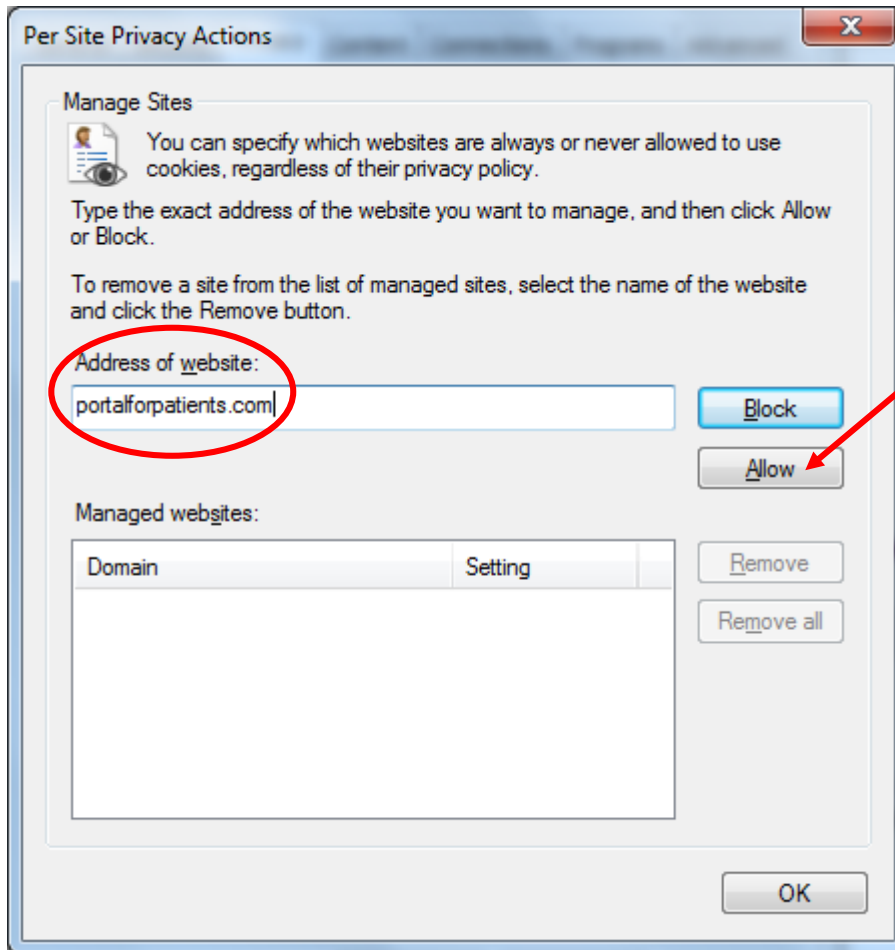
If you do not have a Tools menu, you can also select the **Tools** icon on the far right side of the IE window:



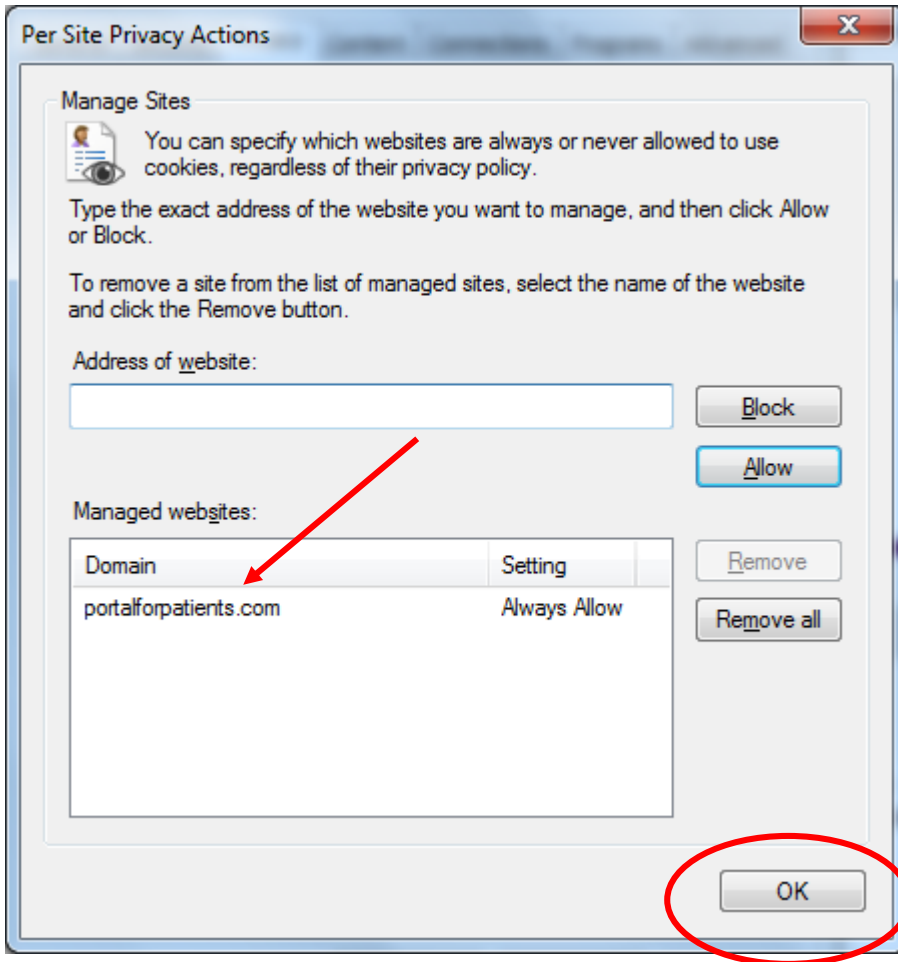
2. The following window will open. Select the **Privacy** tab and click on the **Sites** button.



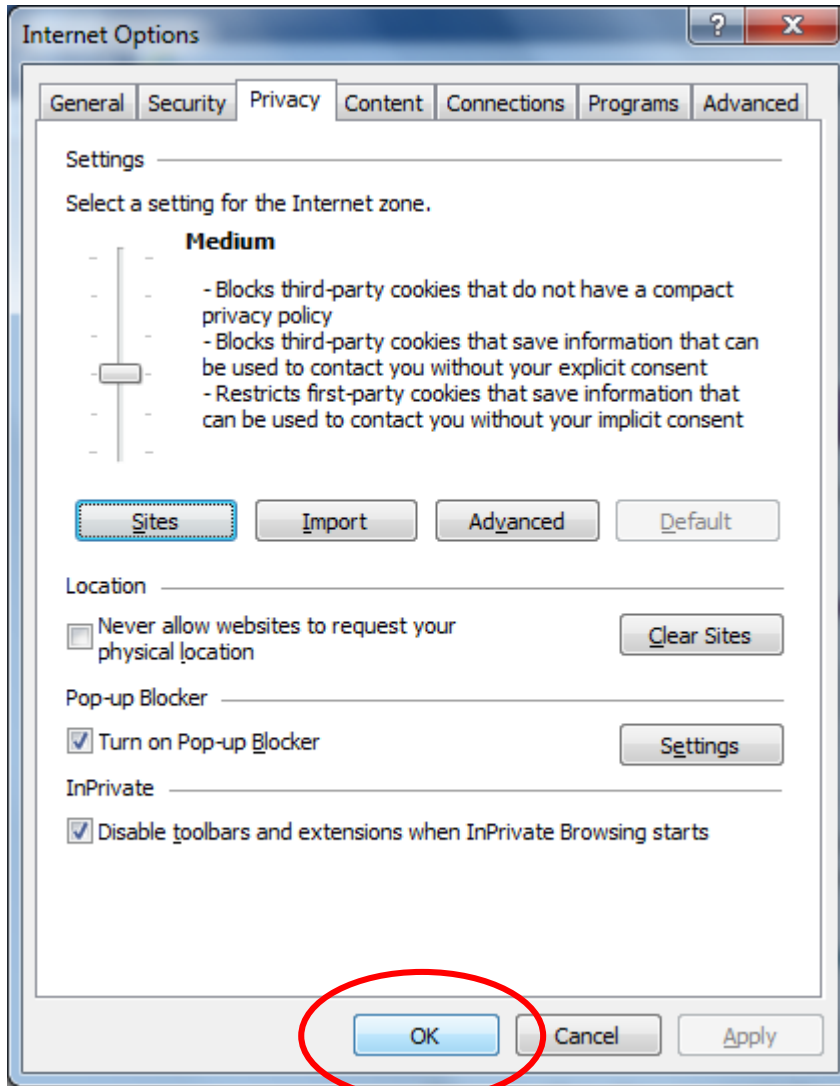
3. Another window will open. Your cursor will be flashing under **Address of Website**. At this location type the following: portalforpatients.com and then click on the **Allow** button



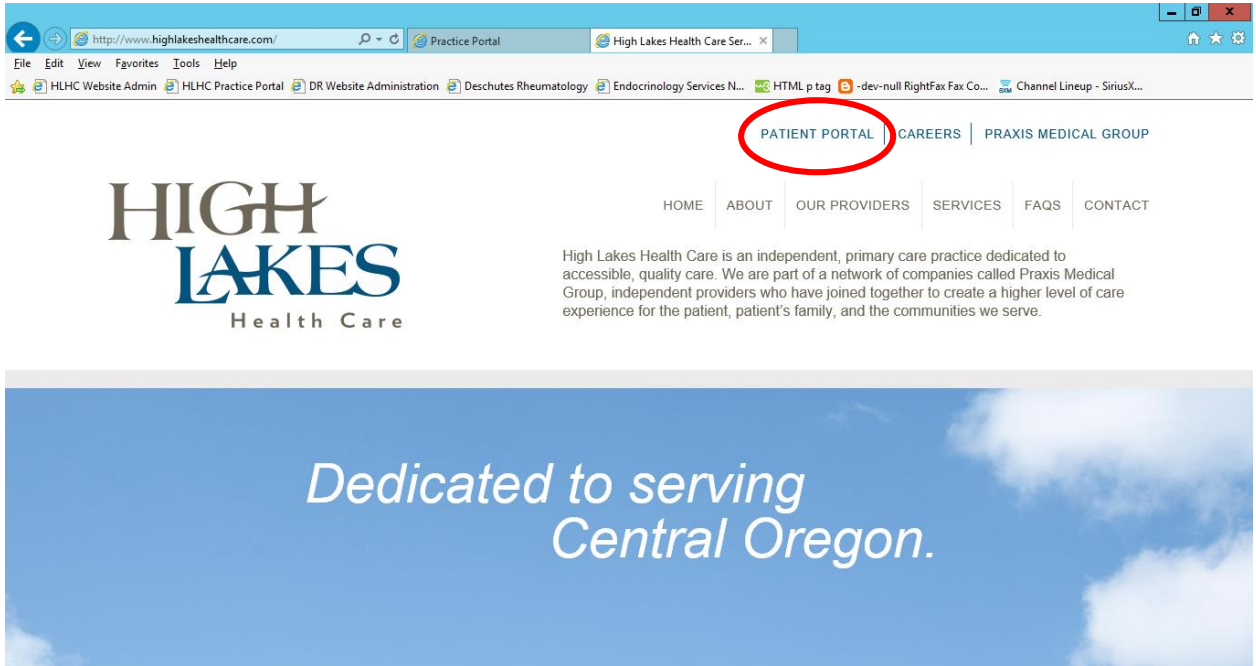
4. Under Managed Websites, you should see portalforpatients.com and [Always Allow](#). Click **OK**



5. Click **OK** in the **Internet Options** window.



- Close all Internet Explorer windows that are currently open. *IE will not apply changes until it is restarted, so you need to close all IE windows.*
- Now return to the High Lakes Health Care web page and select **Patient Portal**.



- Enter your User ID (or your email) and your password. You should be able to log in!

